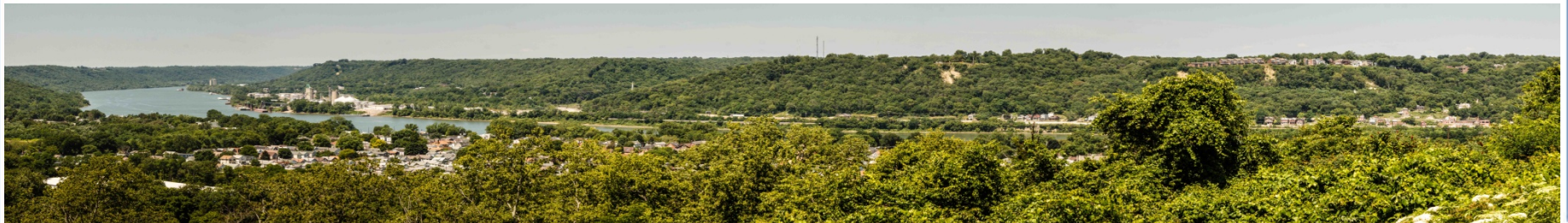


Cincinnati's Western Riverwalk: A Vision for Sustainable Growth

**A Hike/Bike Trail Along
Hamilton County's Western
Riverfront**



**Prepared for the Hamilton
County Park District Board**



West Side Summit - River West Working Group
January 2013

Templehill1969@yahoo.com
Westsidsummit.com

RW

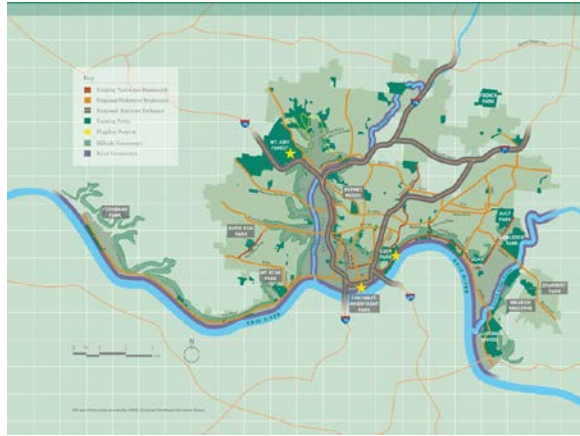
Introduction



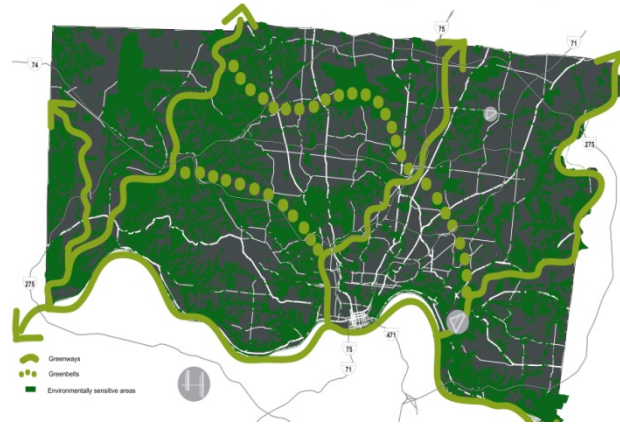
Cincinnati's Western Riverwalk

- The western riverfront is an historic area with mutually compatible and reinforcing land uses
- The river is an amenity that attracts and retains residents and businesses
- The Western Riverwalk directly supports Hamilton County Park District's mission of conservation, recreation, and education

Regional Hike/Bike Plans

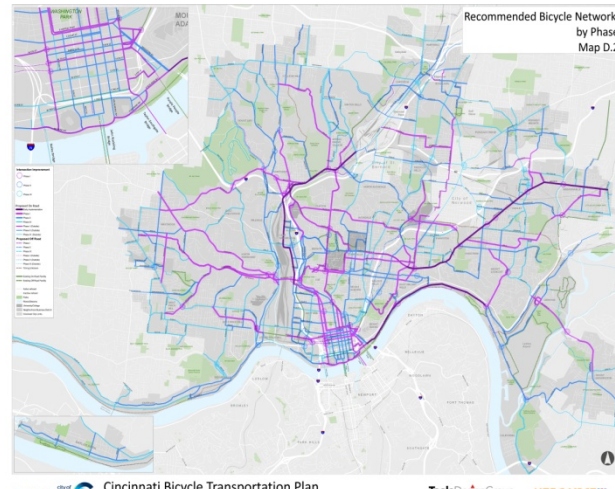
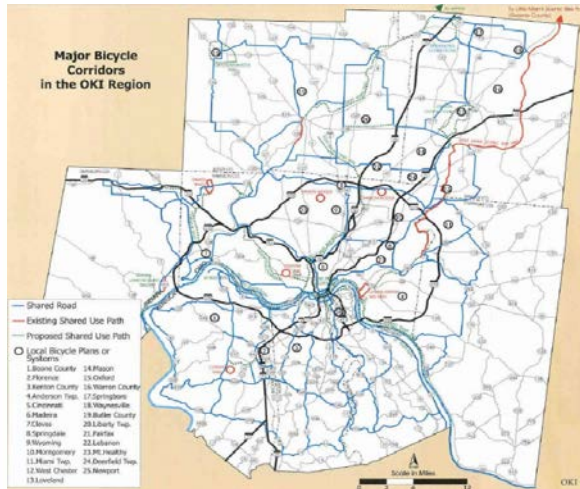


Greenspace Concept Plan



Greenspace along the Ohio River

- OKI Bicycle Corridors
- Cincinnati Parks Centennial Plan
- Hamilton County Compass Master Plan
- Cincinnati Bike Path Master Plan
- All propose a trail along the Western Riverfront



CINCINNATI Cincinnati Bicycle Transportation Plan June 2010 TooleDesignGroup KZF

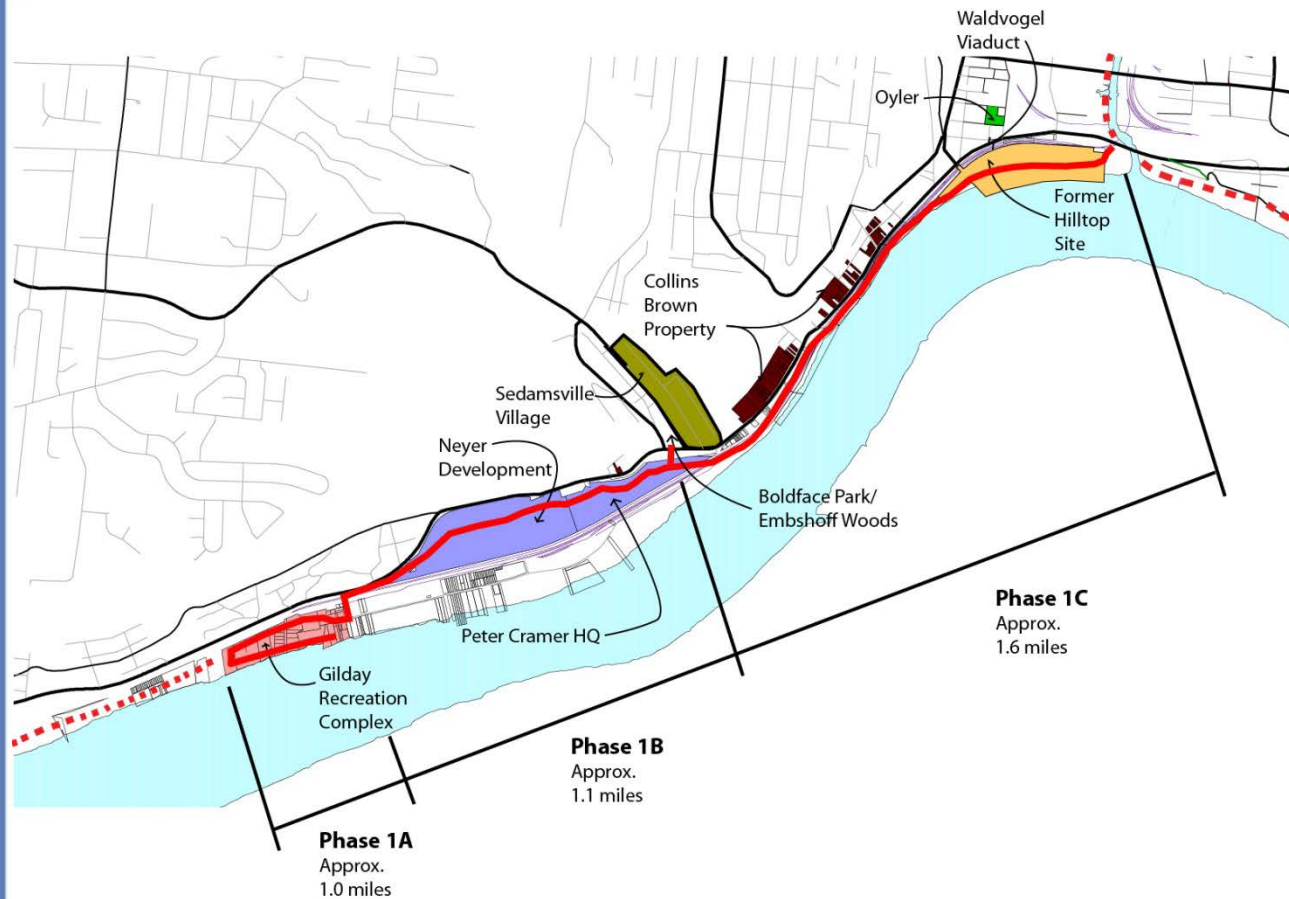
Vision for the Western Riverfront



Connecting Multiple Recreation Opportunities

- The Western Riverfront spans 22 miles from downtown to Shawnee Lookout
- Existing active and passive greenspace can be leveraged with phased trail construction
- The goal is to connect all of these areas with a trail running along the river

Western Riverwalk Phase 1



Phase 1 in three parts:

1A: A loop trail at Gilday Recreation Complex, planned by CRC

1B: A segment connecting Gilday, Boldface Park and Embshoff Woods

1C: A segment from Bold Face to the Mill Creek and Ohio River confluence

Phase 1 spans three communities and approximately 3.7 miles

Accomplishments Along Phase 1



Rediscovering the Riverfront

- Gilday Recreation Complex has been master planned, including a trail
- A 15' trail easement parallel to River Road between Gilday and Boldface/ Embshoff has been secured
- Sedamsville has just been designated Cincinnati's 52nd historic district



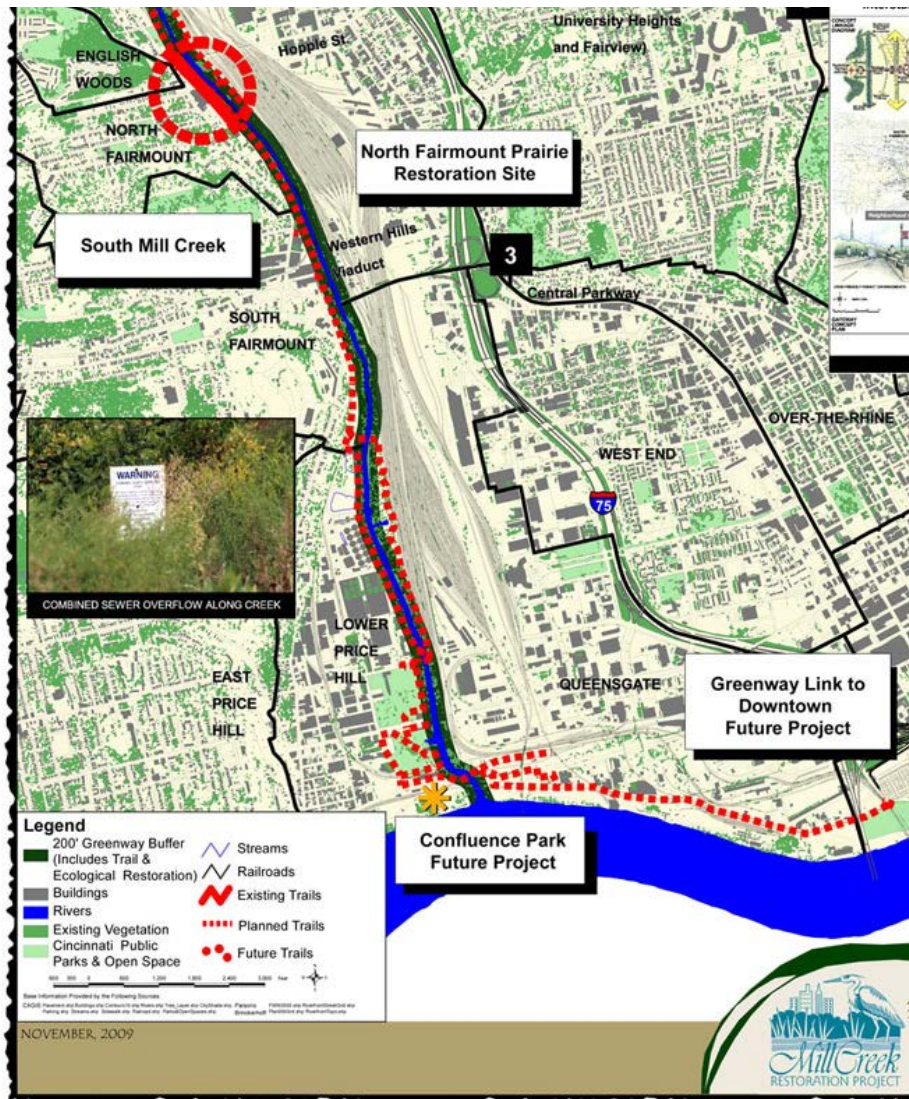
Accomplishments Along Phase1



A Public Entry to the West Side

- The new Waldvogel Viaduct has been designed as an exciting gateway to the West Side
- Lower Price Hill is the most urban neighborhood with river access
- Oyler School has been transformed to a community center, and expansion of the LPH Community School is underway
- The Former Hilltop Site has been zoned RF-R

Connecting People Countywide



Completing the Trail Network

- The eastern end of Phase 1 is the southern terminus of the Mill Creek Greenway at Confluence Park.
- The Western Riverwalk and Mill Creek Greenway will connect to the Ohio River Trail to the east via Downtown
- The Western Riverwalk is an essential link in a regional trail network



We Walked the Walk



Natural Beauty Along the River

- The Phase 1 route takes advantage of vacant land
- It offers access to stunning views in a natural setting
- It preserves an irreplaceable ecological asset



Hidden in Plain Sight



Embracing the Riverfront

- The western Ohio valley is one of the largest green spaces in the region
- The Western Riverwalk will be the first trail of its kind in western Hamilton County
- It will be accessible to 40,000 nearby residents and serves at least one third of the county



West Side Summit - River West Working Group

Enriching Lives, Connecting People



- We urge the Hamilton County Park Board to adopt a plan to create the Western Riverwalk
- This proposal is consistent with multiple existing plans
- Initial focus is on the 3.7 miles of Phase 1
- Many western Hamilton County residents are currently underserved with recreational opportunities
- This trail will encourage access to the Ohio River and surrounding hillsides, our greatest natural assets

Thank You!